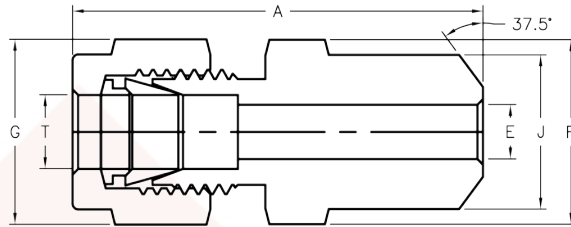
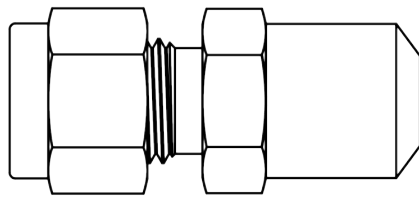


## Male Pipe Weld Connectors



### Fractional tube to pipe

RELYLOK Basic Part No.	T Tube O.D.	Pipe Weld Size	A in. [mm]	E in. [mm]	F Hex	G Hex	J in. [mm]
-2-11-2W	1/8	1/8	1.20 [30.5]	0.09 [2.3]	7/16	7/16	0.405 [10.3]
-3-11-2W	3/16	1/8	1.23 [31.2]	0.12 [3]	7/16	1/2	0.405 [10.3]
-4-11-2W	1/4	1/8	1.29 [32.8]	0.19 [4.8]	1/2	9/16	0.405 [10.3]
-4-11-4W		1/4	1.49 [37.8]		9/16		0.540 [13.7]
-5-11-2W	5/16	1/8	1.34 [34]	0.21 [5.3]	9/16	5/8	0.405 [10.3]
-5-11-4W		1/4	1.52 [38.6]				0.25 [6.4]
-6-11-4W	3/8	1/4	1.57 [39.9]	0.28 [7.1]	5/8	11/16	0.540 [13.7]
-6-11-6W		3/8			11/16		0.675 [17.1]
-6-11-8W		1/2			7/8		0.840 [21.3]
-6-11-12W	1/2	3/4	1.88 [47.8]	0.41 [10.4]	1 1/16	7/8	1.050 [26.7]
-8-11-6W		3/8	1.71 [43.4]		13/16		0.675 [17.1]
-8-11-8W		1/2	1.93 [49]		7/8		0.840 [21.3]
-8-11-12W		3/4	1.99 [50.5]		1 1/16		1.050 [26.7]
-8-11-16W	5/8	1	2.25 [57.2]	0.50 [12.7]	1 3/8	1	1.315 [33.4]
-10-11-8W		1/2	1.93 [49]		15/16		0.840 [21.3]
-12-11-8W		1/2	1.99 [50.5]		0.55 [14]		1 1/16
-12-11-12W	3/4	0.62 [15.7]		1.050 [26.7]			
-16-11-16W	1	1	2.45 [62.2]	0.88 [22.4]	1 3/8	1 1/2	1.315 [33.4]

### Metric tube to pipe

RELYLOK Basic Part No.	T Tube O.D.	Pipe Weld Size (in.)	A mm.	E mm.	F Hex	G Hex	J mm.
-M3-11-2W	3	1/8	30.5	2.4	11	11	10.3
-M4-11-2W	4	1/8	31.2	2.4	11	12	10.3
-M6-11-2W	6	1/8	32.8	4.8	14	14	10.3
-M6-11-4W		1/4	37.9				13.7
-M8-11-2W	8	1/8	34.2	5.4	14	16	10.3
-M8-11-4W		1/4	38.7				13.7
-M8-11-8W		1/2	45.6				21.3
-M10-11-4W	10	1/4	40.9	7.5	18	19	13.7
-M10-11-6W		3/8					17.1
-M10-11-8W		1/2					46.5
-M12-11-4W	12	1/4	43.4	7.5	22	22	13.7
-M12-11-6W		3/8					17.1
-M12-11-8W		1/2					49.0
-M12-11-12W	3/4	50.5	26.7				
-M14-11-6W	14	3/8	44.1	10.7	24	25	17.1
-M15-11-8W	15	1/2	49.0	11.9	24	25	21.3
-M16-11-8W	16	1/2	49.0	12.7	24	25	21.3
-M18-11-8W	18	1/2	50.5	13.9	27	30	21.3

See Ordering Information and Technical Specifications on page 2.