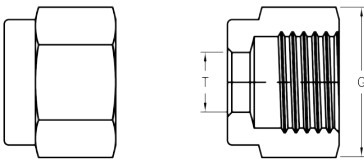
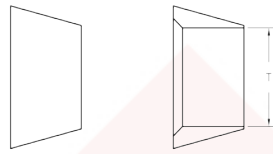


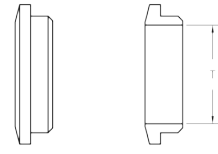
### Nuts



### Front Ferrules



### Back Ferrules



#### Fractional tube

RELYLOK Basic Part No.	T Tube O.D.	G Hex
-1-N	1/16	5/16
-2-N	1/8	7/16
-3-N	3/16	1/2
-4-N	1/4	9/16
-5-N	5/16	5/8
-6-N	3/8	11/16
-8-N	1/2	7/8
-10-N	5/8	1
-12-N	3/4	1 1/8
-14-N	7/8	1 1/4
-16-N	1	1 1/2

#### Fractional tube

RELYLOK Basic Part No.	T Tube O.D.
-1-FF	1/16
-2-FF	1/8
-3-FF	3/16
-4-FF	1/4
-5-FF	5/16
-6-FF	3/8
-8-FF	1/2
-10-FF	5/8
-12-FF	3/4
-14-FF	7/8
-16-FF	1

#### Fractional tube

RELYLOK Basic Part No.	T Tube O.D.
-1-BF	1/16
-2-BF	1/8
-3-BF	3/16
-4-BF	1/4
-5-BF	5/16
-6-BF	3/8
-8-BF	1/2
-10-BF	5/8
-12-BF	3/4
-14-BF	7/8
-16-BF	1

#### Metric tube

RELYLOK Basic Part No.	T Tube O.D.	G Hex
-M2-N	2	11
-M3-N	3	11
-M4-N	4	12
-M6-N	6	14
-M8-N	8	16
-M10-N	10	19
-M12-N	12	22
-M14-N	14	25
-M15-N	15	25
-M16-N	16	25
-M18-N	18	30
-M20-N	20	32
-M22-N	22	32
-M25-N	25	38

#### Metric tube

RELYLOK Basic Part No.	T Tube O.D.
-M2-FF	2
-M3-FF	3
-M4-FF	4
-M6-FF	6
-M8-FF	8
-M10-FF	10
-M12-FF	12
-M14-FF	14
-M15-FF	15
-M16-FF	16
-M18-FF	18
-M20-FF	20
-M22-FF	22
-M25-FF	25

#### Metric tube

RELYLOK Basic Part No.	T Tube O.D.
-M2-BF	2
-M3-BF	3
-M4-BF	4
-M6-BF	6
-M8-BF	8
-M10-BF	10
-M12-BF	12
-M14-BF	14
-M15-BF	15
-M16-BF	16
-M18-BF	18
-M20-BF	20
-M22-BF	22
-M25-BF	25

See Ordering Information and Technical Specifications on page 2.