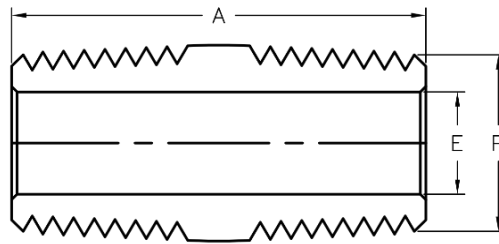


## Close Nipple - NPT thread



RELYLOK Basic Part No.	P NPT in.	Pressure Ratings			
		A	E	psig [bar]	
		in. [mm]	in. [mm]	SS, CS	Brass
-1-CN	1/16	0.75 [19.1]	0.12 [3.0]	11000 [757]	5500 [379]
-2-CN	1/8	0.75 [19.1]	0.19 [4.8]	10000 [689]	5000 [345]
-4-CN	1/4	1.12 [28.4]	0.28 [7.1]	8000 [551]	4000 [276]
-6-CN	3/8	1.12 [28.4]	0.38 [9.6]	7800 [537]	3900 [269]
-8-CN	1/2	1.50 [38.1]	0.47 [11.9]	7700 [530]	3800 [262]
-12-CN	3/4	1.50 [38.1]	0.62 [15.7]	7300 [502]	3600 [248]
-16-CN	1	1.88 [47.8]	0.88 [22.4]	5300 [365]	2600 [179]